

Product Code: \_\_\_\_\_

\_\_\_\_\_

Number: \_\_\_\_\_

**DELI GROUP CO, LTD.**  
Deli Industrial Zone, Ninghai County,  
Ningbo City, Zhejiang Province,China  
serviceglobal@nbdeli.com  
www.deliworld.com      Made in China

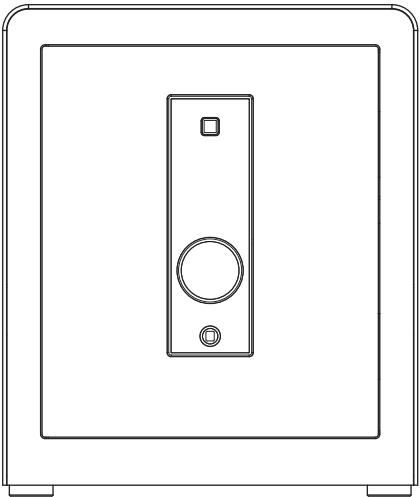


**KEEP FOR  
FUTURE USE**  
Version: 1.0  
Date: 02-2025

**LOCKSWORTH**

# User Manual

## FINGERPRINT PASSWORD SAFE

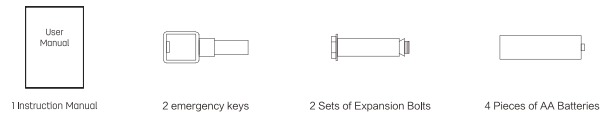


### Contents

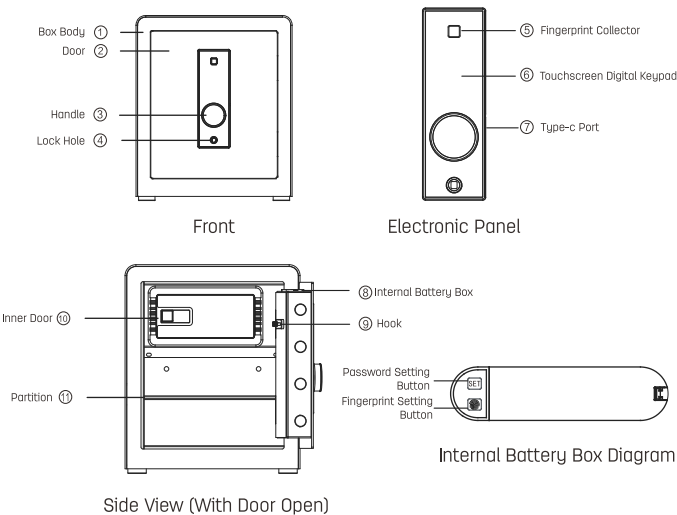
I. Product Unpacking	1
II. Product Diagram	1
III. First Use	2
IV. Password Setting	2
V. Fingerprint Setting	2
VI. Function Setting	3
VII. Opening And Closing Door Operation	3
VIII. Emergency Opening	4
IX. Alarm Function	4
X. Installation Instructions	5
XI. Usage Precautions	6
XII. Common Faults and Troubleshooting Methods	6
XIII. After-sales Service	7

Welcome to use our series of safes, cabinets, and storage boxes.  
Please read this instruction manual carefully before use and operate  
according to the instructions.

### I. Product Unpacking



### II. Product Diagram



### III. First Us

1. After placing the box, insert the key into the lock hole and turn the handle to open the box door, and install 4 pieces of AA Batteries into the internal battery box at the back of the box door.
2. For ease of use, please store the manual and key in a safe place, not inside the box

### IV. Password Setting

1. Open the door, press the [Password setting button] and then press the electronic panel on the [1] key, and then follow the voice prompts to set your password
2. Password length is 3-8 digits, press [#] to confirm after entering the password.
3. When you input the wrong password, you can press [\*] to delete and re-enter it.

### V. Fingerprint Setting

1. Open the door, press the [Fingerprint Setting Button], and the voice prompts "Please press your finger" to register the fingerprint. When registering, press the fingerprint acquisition instrument with different positions of the same finger for a total of 5 times. After completion, the aperture of the acquisition instrument is green and the voice prompts "Fingerprint entry successful".
2. When you need to delete fingerprints, long press the [Fingerprint Setting Button], until the voice prompts that the fingerprints have been cleared, all registered fingerprints will be cleared, after deleting the fingerprints, please register new fingerprints in time.

- 2 -

### VI. Function Setting

1. Vibration alarm: open the door, press the [Password setting button] and then press the electronic panel of the [2] key, open or close the vibration alarm
2. Voice switch: open the door, press the [Password setting button] and then press the electronic panel of the [3] key, open or close the voice prompts
3. Composite verification mode: open the door, press the [Password setting button] and then press the electronic panel of the [4] key, open or close the composite verification mode
4. Dummy password function: in the process of entering the password, you can enter any password, as long as the password contains the password you set up, you can verify the pass, dummy password can be entered a total of 14 digits

### VII. Opening And Closing Door Operation

1. Password to open the door
  - ① Touch the keypad area, press [#] key to enter the password, and then press [#] key to confirm the completion of the password to verify the correct lock will be opened, and at the same time the voice announcement "Unlocked", clockwise rotation of the handle to complete the unlocking operation.
  - ② If you make a mistake during the password entry process, you can press the [\*] key to delete and then re-enter the password.
  - ③ Initial password at the factory is: 12345678, please change the password when you use it.
2. Fingerprint to open the door
  - ① Put your finger on the fingerprint collector, the fingerprint collector will light up the blue aperture and start to identify the fingerprint, after

- 3 -

successful identification, the aperture will light up green and open the lock, at the same time, the voice will announce "Unlocked", then turn the handle clockwise to complete the unlocking operation.

② No fingerprints registered at the factory, any fingerprints can open the door, please add your fingerprints in time to use it.

#### 3. Composite Verification Mode Open Door

In this mode, you need to verify the password and fingerprint at the same time according to the verification method of password and fingerprint to open the door, and the door lock can be opened only when both are successfully verified.

#### 4. Operation of closing the door

Push the door into place and turn the handle anti-clockwise to close the door.

### VIII. Emergency Opening

1. When the battery inside the box is exhausted and can not be operated, please use the Type-c data cable to supply power. Insert the plug of the Type-c cable into the connector on the right side of the panel, and enter the correct password or fingerprint to open the door.

2. When the electronic system fails or the password is forgotten, please use the spare key to open the door. Open the door in the same way as the first time

### IX. Alarm Function

#### 1. Low Battery Alarm

① Wake up the system (open the door or set the password and other operations), if the battery voltage is low, the system will voice prompts the battery power is low, the user must replace the battery as soon as possible.

- 4 -

② If the battery runs out, the system will stop working, you can open the door after using the Type-c cable for power supply or use the key to open the door, the Type-c port is on the electronic panel

#### 2. Password and fingerprint error alarm

① The maximum number of errors allowed for password verification is 5. After 5 errors, the system will alarm and lock for 3 minutes, during which the electronic panel will not be operated.

② Five fingerprint errors will cause the alarm to go off for 20 seconds.

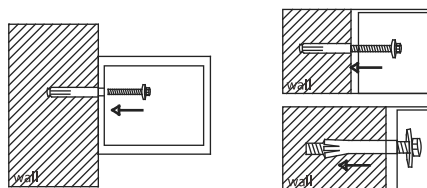
#### 3. Vibration alarm

① After turning on the vibration alarm, prying or vibrating the box will generate a vibration alarm.

② When the system is alarmed but not locked, enter the correct fingerprint or password in time to release the alarm.

### X. Installation Instructions

Always fix the cabinet to a solid concrete wall for safe keeping.



Installation layout

- 5 -

## XI. Usage Precautions

1. Do not put the user's manual, spare keys in the box, they should be stored in other safe place.
2. The battery should be taken out to prevent the leakage of liquid from damaging the electronic system if the product is left unused for a long time.
3. For safety reasons, please be sure to fix the cabinet on a solid concrete
4. Do not store too much cash and valuables when unattended or without a remote alarm device.

## XII. Common Faults and Troubleshooting Methods

Fault Phenomenon	Fault Cause	Method of exclusion
No response from pressing numeric keys to enter password/pressing fingerprint capture device	The battery is dead	Power with cable or emergency key to unlock the electronic combination lock, replace batteries
	Battery polarity reversed	Insert the batteries in the correct way
	Fault PCB	Please contact the maintenance department
The emergency key cannot be inserted in or removed	Foreign matters in the keyhole	Remove foreign matters from the keyhole
	The key does not turn to the limit position	Please reinsert in the correct way
Electronic combination lock is on/fingerprint lock is on, the door cannot be opened.	The handle is not turned to the limit	Please turn the handle to the limit
	The handle has been turned for more than 7 seconds and the electronic lock has been reset	Enter the password again and turn the handle to the limit within 8 seconds
The alarm does not sound	The battery is dead	Replace the battery
	Battery polarity reversed	Insert the batteries in the correct way

## XIII. After-sales Service

Dear user,

Thank you for purchasing our company's product. To ensure your satisfaction and benefits, if your product malfunctions due to quality issues, you can contact your local dealer or authorized service center with your warranty card.

Warranty Instructions:

1. Our company provides free warranty services, including repairs and parts replacement, for any malfunction that occurs under normal use within one year from the date of purchase;
2. This warranty card and the purchase invoice are the proof of our after-sales service to customers. This card must be filled out with the required information in detail and stamped by the dealer to be valid;
3. In the following circumstances, free warranty service is not applicable, and paid repairs will be required:

- ① The product is beyond the warranty period.
- ② The product is damaged due to improper use, maintenance, or storage that does not comply with the product's user manual.
- ③ The product malfunction or damage is caused by force majeure.
- ④ Wearable parts and accompanying accessories.
- ⑤ The product is damaged due to excessive twisting or improper use.

This warranty card is issued together with the product, with one card for each product. To ensure that you can fully enjoy the rights to our free warranty service, please keep this card properly. No replacement will be provided for lost cards.

Purchase Date: \_\_\_\_\_ (Year) \_\_\_\_\_ (Month) \_\_\_\_\_ (Day)

## PRODUCT WARRANTY CARD

Product Information	Product Name		Serial Number			
	Product Model		Manufacturing Date			
Customer Information	Company Name			Contact Person		
	Address			Contact Number		
Sales Information	Distributor Name			Contact Person		
	Address			Contact Number		
	Sales Date			Invoice Number		
Repair Record	Fault Condition	Repair Result	Customer Signature	Technician Signature	Date	

**deli** DELI GROUP CO., LTD.

Cut this copy along the dotted line and keep it in the custody of the dealer

Product Information	Product Name		Serial Number			
	Product Model		Manufacturing Date			
Customer Information	Company Name			Contact Person		
	Address			Contact Number		
Sales Information	Distributor Name			Contact Person		
	Address			Contact Number		
	Sales Date			Invoice Number		
Repair Record	Fault Condition	Repair Result	Customer Signature	Technician Signature	Date	