

Special declaration:
This manual has been strictly and carefully checked and reviewed, but there may still be spelling and technical omissions and errors. Such omissions and errors will be corrected in the new version of the manual without further notice. The copyright of this manual belongs to our company, no other unit or individual is allowed to modify it.

DELI

Thank you for purchasing NO1330 thermal binding machine of DELI Company. The multiple functions and elegant design make the product applicable to individual use and department use. We believe that the thermal binding machine with complete functions will make your document binding have higher efficiency.

To make you correctly use the product and prevent the inconvenience caused to you and other people, please carefully read this manual.

Instruction Manual

Thermal Binding Machine

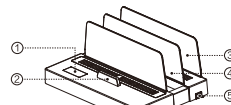
BOX CONTENTS&STRUCTURE INTRODUCTION

The retail box contains the following items:

Thermal Binding Machine x1
Instruction Manual x1

PRODUCT APPARENT STRUCTURE AND THE NAMES

1. Operation panel
2. Sliding plate
3. Placing groove
4. Heating groove
5. Power switch



1. Operation panel: Display the heating and working conditions, and by pressing the "preset" button, you can adjust the binding duration. At the same time, it shows the gear position.
2. Sliding plate: After placing the document in the heating groove, push the sliding plate to press the document firmly, and then proceed with the work.
3. Placing groove: Place the documents.
4. Heating groove: Place the documents to be bound neatly here.
5. Power switch: Switch between working mode and standby mode.

SAFETY INSTRUCTIONS

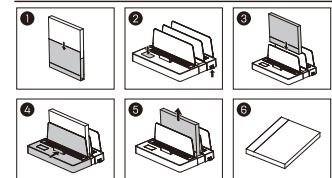
(Please follow the following precautions to ensure safe use)

1. The power supply connected to this machine must be in accordance with the power specifications indicated on the model label.
2. When the machine is not in use for a long time or is being moved, please unplug the plug and cut off the power.
3. If the power cord or plug is damaged or fails to function properly, do not use the machine.
4. Do not exceed the power load capacity to avoid causing fires or electric shocks.

This machine is equipped with an automatic reminder program. If the binding process is completed and the text is not removed for more than 10 minutes, the machine will turn off the heating function. The red working indicator light on the operation panel will flash for 5 minutes. After 5 minutes, the machine enters the standby mode. All indicator lights on the operation panel will go out. If you need to use it, please press the "preset" button. The machine will restart heating.

Warning: Hot components! Touching these components will cause burns to your fingers. After turning off the power, wait for half an hour before touching the components.

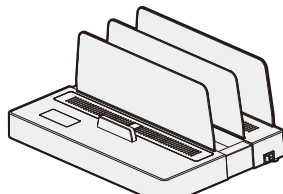
DIRECTION FOR USE



CERTIFICATE

Inspector: _____

Date of Manufacture: _____



T330

Reserved For Use

Version: 2.0
Date: 8-2025

DELI GROUP CO., LTD.
30130 Xuxi Lake Ave, Ninghai County
Zhejiang 355000 China Made in China
info@deli.com www.deliworld.com



- 1 -

- 2 -

1. Binding operation:
(1) Arrange the bound text neatly and place it in a hot-melt Envelope. (Figure 1)
- (2) Insert the power plug, turn on the power switch (Figure 2). The indicator lights on the machine operation panel will all light up. After the self-check is completed, the buzzer emits a "drip" sound and the blue heating indicator light flashes.
- (3) During the preheating process, pressing the "preset" button allows you to set 1 to 3 gears (Figure 2). At this time, when you insert the text, the buzzer will emit a continuous "drip" sound. After removing the text, the sound stops.
- (4) After the 3-minute preheating is completed, the buzzer emits three beeps, and then stops after three cycles. The blue heating indicator light and the red working indicator light remain on continuously. At this point, according to the thickness of the text, press the "preset" button to set 1-3 gears (Figure 2). Among them, gear 1 has a binding thickness of 1-18mm and a preheating time of 90s; gear 2 has a binding thickness of 19-35mm and a preheating time of 150s; gear 3 has a binding thickness of 36-50mm and a preheating time of 210s. Gently place the text to be bound into the heating chamber, ensure that the hot melt adhesive side is in full contact with the heating plate (Figure 3), and there is a beep sound "drip" once. Push the slide plate in to press (Figure 4), and start the binding process. The red working indicator light flashes. After the binding is completed, the buzzer emits three beeps twice before stopping, and the red working indicator light remains on continuously. Remove the text (Figure 5), place the binding text on the desktop, and let it stand and cool for about 5 minutes (Figure 6).
- (5) Automatic shutdown: If the binding process is completed and the text is not removed for more than 10 minutes, the machine will turn off the heating function. The blue heating indicator light will go out. The red working indicator light on the operation panel will flash for 5 minutes. After 5 minutes, the machine will enter the standby state. All indicator lights on the operation panel will go out. If you need to use it, please press the "preset" button. The machine will restart heating.

Table showing the thickness of the envelope and the number of bound pages

Envelope thickness	1mm	2mm	3mm	4mm	6mm	8mm	10mm	12mm	15mm
Number of binding pages	1-8	19-15	18-25	26-35	36-55	51-70	71-85	86-100	101-130
Envelope thickness	18mm	20mm	22mm	24mm	27mm	30mm	33mm	36mm	40mm
Number of binding pages	131-180	181-185	181-200	201-220	221-250	251-280	281-310	311-340	341-380
Envelope thickness	45mm	50mm							
Number of binding pages	381-430	431-480	Note: The paper is measured at 70g.						

PRODUCT PARAMETERS

Power Supply: 220V-240V~/50Hz
Power: 200W
Gear: 90s/150s/210s
Working Temperature: 140°C±15°C
Binding Length: 330mm

Binding Thickness: 50mm
Preheating Time: 3min
Device Size: 363mm×205mm×162mm
Net Weight: 2.08kg

FAULT PHENOMENON AND DESCRIPTION

Fault phenomenon	Analysis of the cause of the fault	Troubleshooting methods
The machine is not working	The power plug is not properly inserted Insufficient power supply voltage	Plug in the power supply Provide the rated working voltage

WARRANTY CARD

Thank you for your purchase of our products. The interests of customers who purchase our products will be protected. For any malfunction due to product quality problems, please contact authorized local dealers or service centers with this receipt and the warranty card.

Warranty terms:

1. For product failures occur under normal operating circumstances, free of charge repair and spare parts replacement service shall be provided by our company within one year commencing from date of purchase.
2. Customers are required to present this warranty card and the original purchase invoice to our company upon request for warranty service. This warranty card shall be valid only after the following form is filled out in detail and affixed with official seal of the dealer.
3. No fee of charge repair service shall be provided in the event of any of the following circumstances:
 - (1) Expiration of the warranty period.
 - (2) Damages caused by improper use, maintenance or storage not in accordance with the requirements of the user manual.
 - (3) Failure or damage resulting from unauthorized disassembly, repair or modification.
 - (4) Failure or damage caused by force majeure.
 - (5) Wear parts or accessories.
 This warranty card is being delivered with the product, one card for one product. Please keep this warranty card in proper condition for free warranty service. There is no replacement if lost.

WARRANTY CARD

Size of Purchase _____ V _____ M _____ D _____

Product Information	Product Name	Product Model Number	Serial Number	Manufacturing Date
Customer Information	Company Name	Address	Contact	Phone
Sales Information	Dealer Name	Address	Contact	Phone
	Date of Purchase	Invoice No.	Invoice No.	Invoice No.
Maintenance Record	Description of Malfunction	Maintenance Results	Customer Signature	Maintenance Technician Signature
				Maintenance Date

This copy shall be cut along the dotted line and kept by the dealer.

Product Information	Product Name	Product Model Number	Serial Number	Manufacturing Date
Customer Information	Company Name	Address	Contact	Phone
Sales Information	Dealer Name	Address	Contact	Phone
	Date of Purchase	Invoice No.	Invoice No.	Invoice No.
Maintenance Record	Description of Malfunction	Maintenance Results	Customer Signature	Maintenance Technician Signature
				Maintenance Date

- 3 -

- 4 -